



# SHIBAVERSE

WHITEPAPER



**SOCIAL AND  
EDUCATIONAL  
METAVERSE  
FOR SHIBA INU  
COMMUNITY  
AND OTHER  
BLOCKCHAIN  
ENTHUSIASTS**



**SHIBAVVERSE.IO**



# Contents

|   |           |
|---|-----------|
| <b>01. Introduction</b>   | <b>5</b>  |
| <b>02. Motivation</b>   | <b>6</b>  |
| <b>03. Growth potential</b>   | <b>7</b>  |
| <b>04. What makes us unique</b>   | <b>9</b>  |
| <b>05. Goals of Shibaverse</b>  | <b>7</b>  |
| ▲ Entertain and bring financial opportunities for Shiba Token community |           |
| ▲ Educate young generation  |           |
| <b>06. What will Shibaverse look like?</b>                              | <b>11</b> |
| ▲ Genesis district - the beginning of our metaverse                     |           |
| ▲ What next?  |           |
| <b>07. Shibaverse Assets</b>  | <b>13</b> |
| ▲ VERSE Tokens (ERC-20)   | <b>13</b> |
| ➤ Utility   |           |
| ➤ Token Distribution  |           |
| ➤ Token Details   |           |
| ➤ How to purchase   |           |
| ▲ NFT Tokens (ERC-721 and ERC-1155)                                     | <b>16</b> |
| ➤ Next-generation NFT is more than a picture                            |           |
| ▲ Shiba balloon dog NFT   | <b>17</b> |
| ➤ Asset characteristics   |           |
| ➤ Why balloon dog?  |           |
| ➤ Ways to get Shiba balloon dog NFT                                     |           |

|  |           |
|--|-----------|
| ▲ Real estate NFT  | 23        |
| ▶ Asset characteristics  |           |
| ▶ Interior design  |           |
| ▶ Interior customisation   |           |
| ▶ VR art galleries, shops, or other commercial spaces                      |           |
| ▶ Attributes   |           |
| ▶ Commercial vs. Private   |           |
| ▶ Ways to get Real estate NFT  |           |
| ▲ Additional NFT assets  | 33        |
| ▲ Where will the NFTs live?  | 34        |
| <b>08. Business model</b>  | <b>34</b> |
| ▲ Initial funding of the project   |           |
| ▲ Incomes from minting NFTs  |           |
| ▲ Incomes from transacting NFTs  |           |
| ▲ Paid services  |           |
| <b>09. Interaction, photorealism &amp; motion</b>                          | <b>38</b> |
| ▲ We are focusing on development of three kinds of independent experiences |           |
| ▶ VR photo-realistic real estate interiors and cityscapes                  |           |
| ▶ Photo-realistic movies and animations                                    |           |
| ▶ Interactive play-to-earn games utilize 2D game engines                   |           |
| <b>10. Roadmap</b>   | <b>41</b> |
| ▲ Beyond the roadmap   |           |
| <b>11. Risks</b>   | <b>43</b> |
| <b>12. How to support our project</b>                                      | <b>45</b> |
| <b>13. Team</b>  | <b>46</b> |
| <b>14. Useful information</b>  | <b>47</b> |



# Introduction

Shibaverse (VERSE) is a social, educational, and entertainment styled Metaverse project which aims to be a decentralized virtual reality platform on the blockchain—featuring many interactive aspects, such as events, gaming, and work opportunities in a captivating digital environment that can be roamed freely.

Taking decentralization, community, and contemporary design to heart, we believe that virtual reality is the first step in a grand adventure into the landscape of the imagination. Once upon a time, these digital worlds were just a dream of science fiction. But now, with the right technologies, opportunities, and innovative contributions from talented people, we can experience those dreams in waking consciousness.

With the rise of GameFi (Game finance), which combines decentralized finance (Defi) and Non-Fungible Tokens (NFTs) with play-to-earn blockchain-based online gaming, planning and developing a community-driven metaverse for the people, by the people, was a no-brainer.

We share the belief that virtual reality will be the foundation of our communication, travels, organizations, social platforms, and much more in the not so distant future. For this reason, an interactive and modern virtual reality metaverse for crypto enthusiasts was imperative to start developing.

Within Shibaverse, users can have their own digital real estate living space and other NFT assets to express and share their interests, life, work, personality, and passions with others in an innovative way.

## Motivation

The internet has always been a unified space for people of the world to come together and share ideas. Despite our differences and cultural diversity, almost all of us seek happiness, prosperity and want to help others who are less fortunate. We share a common social impulse toward achieving financial freedom and helping others.

We believe that living in a world where communities can make a difference is essential, as we are stronger when we unite with a common purpose. Collectively our voices and actions are very powerful and the potential and possibilities are endless.

The core team consists of three people with varying backgrounds in blockchain, architecture, design, and marketing. We are neither Shiba Inu developers nor admins. However, we are community members inspired by Ryoshi's vision of a "decentralized sovereign entity and totality" for a better world. And so, we decided to use our skills to build something valuable and beneficial for everyone.



***With Shiba, we have from the beginning made very clear that no-one is in charge. There is no man accountable, no person responsible and no entity has the keys to the kingdom.***

- Ryoshi

These words of Ryoshi were those that genuinely spoke out and encouraged us to build this metaverse as members of a community where everyone is of equal status. Each person within the grand scheme of things allows for something that was once labeled a joke, to thrive and become something of great value. When we look back and compare with when Bitcoin was new, with only a few believing that it could change anything. Fast-forwarding to now, we can see that it changed the world and gave freedom and opportunities to the average person.

Everything we mentioned above sparked our desire to build Shibaverse and participate in this blockchain revolution that is happening. We wouldn't miss the chance to pass on these resources to the young people who are our future, and who will always be the source of our inspiration.

We want to build a space where teenagers and even children can find guidance and support on how to be financially secure while making the most of the blockchain decentralized world - an unique and exciting place to live, learn, work and earn.

## **Growth potential**

Looking at other metaverse projects on the market that also offer digital real estates, such as Decentraland, Sandbox and Axie Infinity, we see exponential growth from their initial launch up to the present time.

With Axie Infinities, sales have quickly surpassed \$2 Billion and gave them the financial capabilities to distribute millions of dollars to their early adaptors, most of which are people from less developed countries. From this we can easily see the staggering potential in this new sector of gaming.

Prices of digital real estate have also been growing exponentially. A plot of LAND (Decentraland Digital Real estate) sold for around **\$2,000 back in**

**January** almost triple what it sold for in 2020. Then two months later, in March, **prices shot up over \$175,000** for the same piece of LAND.

As of today, the record sale price of LAND in Decentraland is around \$900,000, and Sandbox has seen LAND sales as much as \$500,000. Both competing metaverses are causing a feeding frenzy within the ERC-721 digital real estate industry, and this is only just the early adoption stage. With both digital worlds only totaling around 130,000 holders between them, there is still massive room for growth.

The global video game industry has seen massive growth already in the past year due to the widespread economic disruption caused by the coronavirus pandemic.

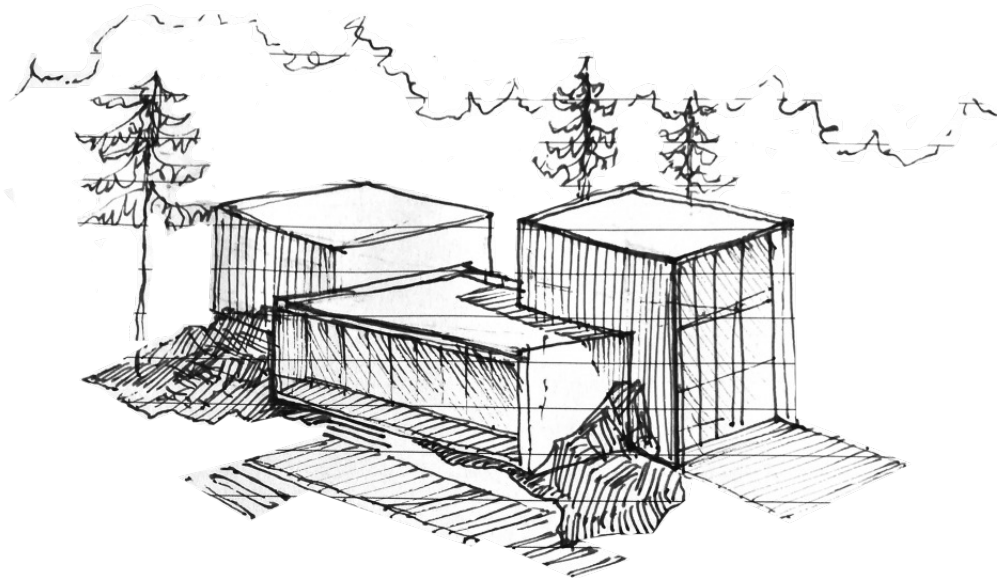


**With repeat lockdowns across the globe and the practice of social distancing, consumer and business activity have been reduced to a minimum.**

This has been the catalyst for this expansion. Now we are seeing the beginnings of mass adoption which is driving innovation and progress in the space, and we don't see this slowing down any time soon.

Online gaming offers social interaction and an engaging distraction as an alternative to old-fashioned chat rooms. Initial data has shown a considerable spike in playing time which has also increased sales since lockdown. The virtual reality aspect will bring people even closer as we may face future pandemics and similar crises.

Market research also shows that gaming-related projects manage to increase in value even during bear markets. People play games and want entertainment during both bear and bull markets.



sketch of villa in Genesis District

## ► What makes us unique

Whereas most metaverse projects are created randomly, and may deviate a great deal from reality, Shibaverse will boast contemporary modern design while utilizing urban spaces inspired by present-day architecture and photo-realistic panoramic renderings. This will allow users to create and walk freely within their dream homes giving them a sense of familiarity.

Cities will have many different functions and will be organized in well organized blocks. This will allow for a highly interactive and engaging environment for both users and their Balloon Shibas.

We believe that having a touch of fantasy, such as balloon dogs, offers a unique quality to our world, which in turn makes Shibaverse a strong, creative and robust brand.

Incorporating things like academies, galleries of art, and institutions within our world, will ensure that people can continually learn and develop themselves while learning, being entertained, earning wealth and much more.





# Goals of Shibaverse

## 1

### **Entertain and bring financial opportunities for Shiba Token community**

By creating districts that correspond to the Shiba Inu Token platforms and projects such as Shibaswap, Shibarium, ShibaNet, and other products promoted by the Shiba Inu Ecosystem, we hope to spark further interest in the Shiba Inu community. We want to bring all the current and future holders entertainment, financial incentives and opportunities in one modern virtual captivating environment. We believe that this will allow the community to further express themselves and their interests, life, work, personality, and passions through ownership of their very own digital living spaces and other assets.

## 2

### **Educate young generation**

Blockchain offers a unique opportunity and levels the playing field for those who wouldn't have had these opportunities before it existed. Now we see teenagers playing blockchain games and financially supporting their parents in less wealthy parts of the world. We want to further increase those chances by educating younger generations in a fun and interactive way. Shiba Academy and Shiba Studio will be places where teenagers and even children will find advice. Guidance, and mentorship on how to be more financially secure, continually develop themselves in areas such as design and code, to ensure they make the most of the blockchain world. We love young people and want to see them succeed in a quickly changing world.

## **What will Shibaverse look like**

The Genesis district will be the focal point of Shibaverse, the most prestigious area of ShibaCity, Capital of Shibaverse, situated by the sea coast. Other districts of ShibaCity will represent native platforms and products of the Shiba Inu Token Ecosystem. Districts such as the Shibarium district, which will be partly immersed underwater, the Shibaswap business district, which will boast impressive skyscrapers, and other districts will each have their own unique purpose, design, and atmosphere.

### **Genesis district - the beginning of our metaverse**

As a cameral, otherwise described as a judicial or legislative place for first investors, Genesis district is modeled and inspired by Coastal European cities. The area will be surrounded by woodlands and hills, and each 2-3 story apartment will be placed on a hill to ensure a beautiful view of the sea. The public square in the center will house a balloon dog statue, having one side open to the sea with access to the beach and yacht port; the opposite side will have views of the ShibaSwap Business District skyscrapers. Genesis will be made up of other small public spaces, plenty of greenery, parks, and streets to ensure both you and your Shiba will have enough fresh air and things to discover within the natural surroundings. Simultaneous design of apartments, houses, facades and the overall city will correlate these detailed aspects of architecture, which will realize our beautiful photo-realistic virtual metaverse. Genesis will only have 300 private and 30 commercial real estates, making it an essential and exclusive place to reside.



**Genesis will be built up of several small public spaces, plenty of greenery, parks and narrow streets.**

**▲ What next?**

The amazing thing about virtual reality is that there are infinite possibilities, and no limits to what can be created. With ShibaCity as the heart of our project, our metaverse will expand with more cities, areas, districts, and even buildings representing other cryptocurrency projects, communities, and real-world brands and institutions. Just imagine Nike or Coca-cola having their skyscrapers or virtual factories within our metaverse! The possibilities are endless.



▶ **Shibaverse Assets**

# **VERSE Tokens (ERC-20)**

**Token Ticker: VERSE**

**Total supply: 1 000 000 000**

**Ethereum contract address:**

**0x7ae0d42f23c33338de15bfa89c7405c068d9dc0a**

# **Utility**

VERSE token is an ERC-20 utility token which will be used across Shibaverse. VERSE is now available only on Ethereum mainnet with contract address `0x7ae0d42f23c33338de15bfa89c7405c068d9dc0a`

VERSE tokens use case will be as follows for:

## **Purchases within the Shibaverse platform**

VERSE will be necessary for purchasing real estate, land, or shibas from the primary market.

## **Game participation and incentives**

VERSE will play a role in the play2earn mechanism.

## **Rewards**

VERSE will be used to incentivise the community (Such as VERSE stakers).

## **Governance**

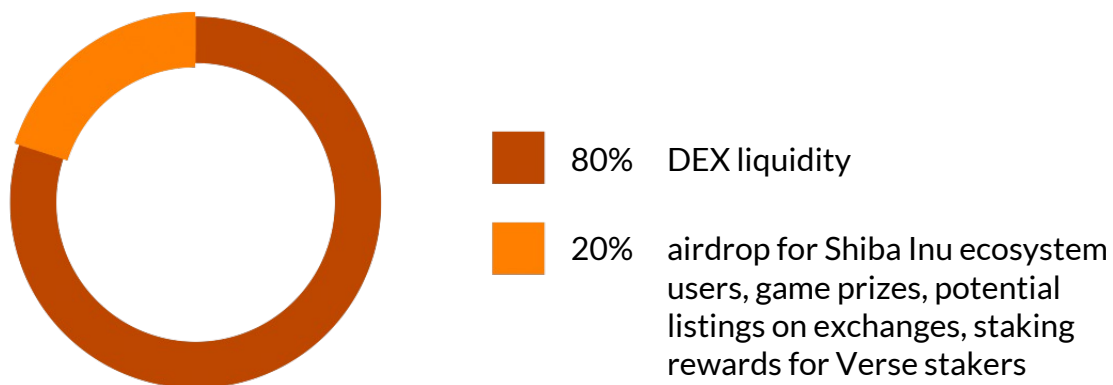
Though we as a team need to hold the vision from the beginning, we hope that Shibaverse will become more and more community-driven, and eventually, more voting power will be given to the Shibaverse community. It will be good to have VERSE in your wallet prior to any DAO (decentralised autonomous organisation) rights being implemented.



## ▶ Token Distribution

Shibaverse is a community-based project, and for that reason, 100% of the circulating supply is dedicated to the community. There were no presales, venture capital raising, or seed investors before launch. There is also no team wallet. All the investors, including devs have had to market buy their tokens.

VERSE had a fair launch on Shibaswap decentralized exchange on the 19th of August 2021. At time of launch, 80% of the total supply was added to the liquidity pool. All VERSE tokens in the current holder's wallets were purchased from the open market. The remaining 20% of the supply is locked till the end of 2021 and will be used for both Shiba Inu and Shibaverse community incentives.



### **20% of total supply is reserved for:**

- Airdrop for Shiba Inu ecosystem users
- Game prizes
- Potential listings on exchanges
- Staking rewards for Verse stakers

These tokens will be released gradually over the year 2022 to avoid price suppression and protect early holders.

## **How to purchase**

At the time of creating whitepaper, VERSE Tokens can be purchased on following decentralized exchanges:

### **SHIBASWAP**

<https://shibaswap.com/#/swap>

### **UNISWAP**

<https://app.uniswap.org/#/swap>

## **NFT Tokens (ERC-721 and ERC-1155)**

### **Next-generation NFT is more than a picture**

A non-fungible token (NFT) is a unique digital asset representing ownership of items such as art, video clips, music, and more. Currently, the majority of NFTs available on popular marketplaces are only pictures, but NFTs are quickly evolving into something much more varied.

The most compelling use cases of NFTs currently (in our opinion) consist of in-game items and assets. Soon, NFTs will develop new utilities such as further in-game interaction and give access to restricted or unique content. Just like cryptocurrencies are called programmable money, NFTs can also be programmable assets.

We want NFT assets across Shibaverse to take full advantage of the potential made available through blockchain technology. What may only start as digital

real estate, Shiba balloon pets and accessories, have the potential to develop into new groundbreaking features in the future. We want Shibaverse to be the tip of the spear when it comes to NFT innovations as well as blockchain technologies as they develop and become available.

## ▶ **Shiba Balloon Dog NFT**

### **Asset characteristics**

#### ▶ **Opens door to Shibaverse**

Having your Shiba Inu NFT will enable you to access Shibaverse, participate in different in-game features, in community events, and taking paid jobs regarding the development of Shibaverse. Also, if you are a parent or guardian, you can take part with your child in the Shiba Academy educational track.

#### ▶ **The uniqueness of your Shiba**

Each Shiba balloon dog will be unique. It will have its own unique combination of appearance, skills, strengths, and weaknesses. In further stages of platform development, it will be able to learn and improve its abilities. You will also be able to give a unique name to your Shiba.





## **A living creature - play and earn**

Your Shiba will not only be an image, but as a 3D rendered living creature, it can take part in games and competitions. All Shibas will have their special traits, skills, qualities, strengths, and weaknesses, which means some may perform better than others in specific tasks. Some may be team players, and some may not, but all will be friendly and kind to their owners. No pet will be harmed during any game play. No dog fights accepted! Simply treat your pet well, and your winning Shibas will reward you with VERSE tokens! Please take care of your small animal friends.



## **Having puppies**

Your Shibas can breed! Owning a male and a female Shiba (together with real estate) will allow them to reproduce, adding puppies to your family! Puppies will inherit some of their parent's characteristics, and as time passes, they may also have offspring of their own. Their skills and traits will also vary. These traits will also affect their value on the open market, as some may be more suitable for specific play-to-earn competitions.



## **Why balloon dog**

You may be wondering, why balloon dogs and not real looking Shiba Inu dogs? We are aware that our choice has pros and cons. Although there will be some real Shibas in the city, we choose symbolic balloon dogs for the logo and NFTs for various reasons. Below are the main ones:

- Balloon dogs make our project unique and easy to remember. There are many tokens that take the Shiba Inu logo and apply some small changes. These projects eventually become indistinguishable and struggle to stand out.



- They power up creativity. Balloon dogs can fly (the sky's the limit) or be afraid of sharp items which only makes them more fragile, valuable and special. They can be more attractive to children or to people from outside the Shiba community, and they are certainly more memorable.
- They fit different styles of designs. They suit both modern and classic spaces. They are easier to render and have more potential for various versions, each with their own unique characteristics and appearances. There is only so much we can do creatively when it comes to real dogs. So balloon shibas allow us to have more creative direction, developing real dogs would only make them seem like different creatures.
- Finally, Balloon dogs offer an added mythical touch to our photo-realistic world. We love the idea of creating contrasts, so while everything else is almost indistinguishable from the real world, a moving, breathing piece of art like this makes for a strong and unique concept. We are betting that they will add a special touch to our metaverse and in the end will make for a pretty interesting brand.







## **Ways to get Shiba balloon dog NFT**

- 1** Early purchase of VERSE tokens
- 2** Competition prize
- 3** Purchase of limited special editions PRE-NFT
- 4** Minting Balloon Dog NFT after platform launch
- 5** Locking a male and a female in real estate
- 6** Purchase on the second market from other users

# 1

## **Early purchase of VERSE tokens**

For every 0.05ETH invested into VERSE Tokens before the end of September 2021, you will receive a Special Edition Shiba Balloon Dog NFT. These NFTs will be the rarest and most special dogs in terms of skills, qualities, and attributes. For every 0.1ETH invested you will receive both a male and a female dog. To get this promotional airdrop, you **MUST** hold your all purchased VERSE tokens until snapshot at the end of Q4 2021. The sale and repurchase of these tokens will disqualify you from this promotion. These will be airdropped after the platform launch.

# 2

## **Competition prize**

Between now and snapshot in December, we will be running several competitions and giveaways for incentivizing our early investors and for marketing purposes. Some of the prizes will include Special Edition Shiba Balloon Dog NFTs. Please note that the Pre-NFT prizes will not be the final utility asset but a JPEG artwork representation. You will receive the actual in-game utility Balloon Dog NFTs after platform launch.

# 3

## **Purchase of limited special editions PRE-NFT**

You will also have a chance to purchase some Special Edition Shiba Balloon Dog NFTs (again JPEG artwork representation) before the platform launch, which will then make you eligible to receive the actual corresponding in-game utility Balloon Dog NFTs after platform launch. These limited edition promotional NFTs will be available for purchase on popular marketplaces like OpenSea.

## **4**

### **Minting Balloon Dog NFT after platform launch**

Minting will require VERSE tokens worth approximately \$20. We want Shibaverse to be as inclusive and easy to afford for all people around the world. During the minting process, skills, traits, and attributes will be randomly assigned. The probability of getting a very skilled (Special Edition) dog will be very low as this will allow the Special Edition Balloon Dog NFTs obtained in the first 3 methods to be exclusive and maintain a higher value. This is why it is worthwhile to participate in the contests and buy the special editions via OpenSea once available if you wish.

## **5**

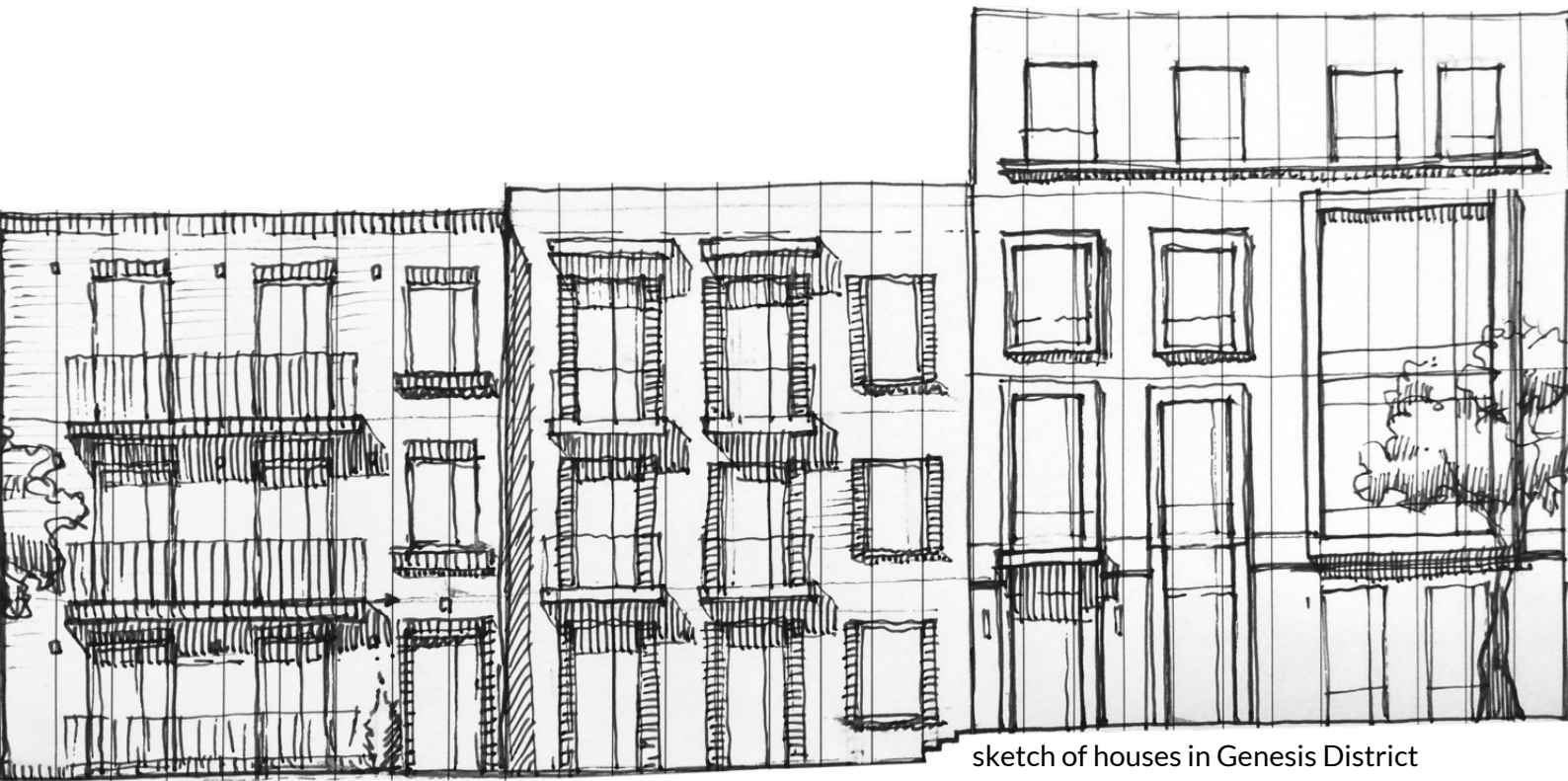
### **Locking a male and a female in real estate**

Being the owner of real estate and owning two balloon dogs of the opposite gender gives you a chance to have NFT puppies. This “locking” mechanism is described in greater detail in the real estate section below.

## **6**

### **Purchase on the second market from other users**

Last but not least, after our platform launch, users will be able to buy and sell their Balloon Dog Shiba NFTs freely without restriction. This will allow people to find specific types of Shibas with unique attributes and traits that may suit their needs.



sketch of houses in Genesis District

## ▶ Real estate NFT

### Asset characteristics

Real estates within Shibaverse will be in a form of apartments (within buildings) and detached houses.

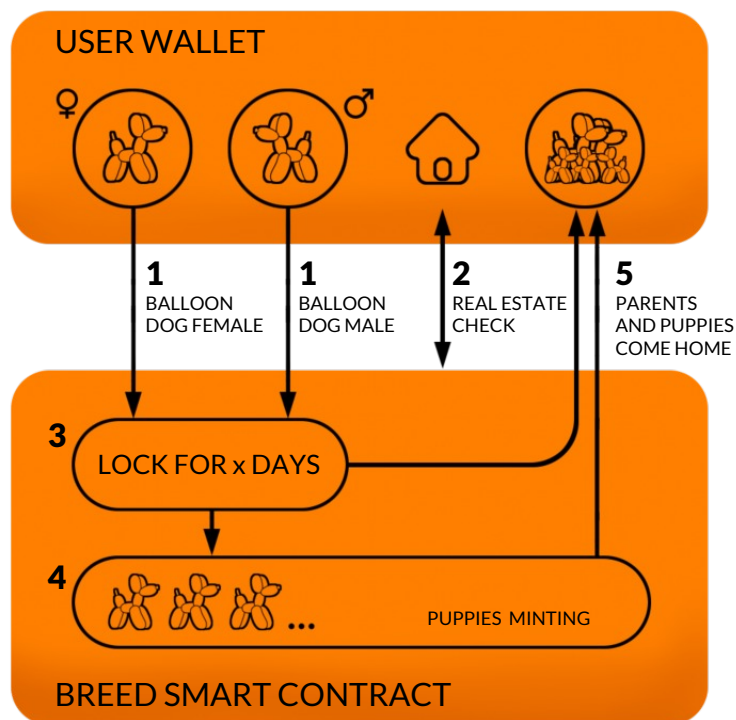
### ▶ Buy, sell, lend

Each apartment or house will be a blockchain NFT and, as a result, can be traded in a secure and trustless way (not depending on a third party). Depending on the district, location, and size, each real estate will have its market value which will increase as the popularity of Shibaverse grows. Further stages of development will enable lending functionality.

### ▶ Have your own puppies and earn

Being the owner of real estate and two balloon dogs of the opposite gender gives you a chance to have NFT puppies.





The user chooses two shibas and one real estate (1). Then Smart contract checks (2) if the real estate has enough free space to lock dogs in this particular real estate. If all conditions are met lock is performed and the timer is set (3). After timeout smart-contract mints puppies (4). Real estate space and shibas couple are freed and family with its new members comes back to user wallet (5).

The larger your home, the more Shiba couples you can place within the property, and the more offspring they may be able to reproduce.

Districts will differ from each other in birth rate, with Genesis District having the highest. For example, if you lock a male and a female for fourteen days in a Genesis apartment, they will have three puppies. The same male and female locked in Shibaswap district will give you only two puppies. Numbers are currently only an example to explain the mechanism and may differ upon platform launch.

To ensure the health and well-being of future parents and puppies, locking Shibas in an apartment will disable the possibility for them to attend games and competitions for these specific shibas until their offspring's birth. Future parents need to have a rest!



# ► Interior design

## Two types of interiors

Each private apartment will have two standard interior designs available to choose from. For commercial spaces, only image two will be available.



sketch of apartment

## TYPE 1

This will be the default type for most private real estate - a cozy interior with a living room, kitchen, and bedroom, and decorated with furniture. For each shape of real estate, we will have one common interior. Although the interior might be the same as your neighbors (if they own the real estate of the same meterage and shape), there will still be at least one thing different, such as the view from the window. When you approach the window, you will see that your location differs from any other users' apartments.



sketch of showroom

## **TYPE 2**

The second Interior will be optimal for an exhibition space. If you are a content creator, or an artist and you would like to present your work, this type of interior is the way to go for you. It will have spaces prepared for hanging paintings, digital content, spots around the property for sculptures, art pieces, and areas for information screens where you can place trailers, short clips, and other content to either express or introduce yourself.

### **➤ Interior customization**

Each space can be changed and customized. However, please note that equipping any interior with custom objects will demand human input and computing resources. The artwork has to be imported into the modeling program and then rendered together with the existing interior, and in the end, new renderings have to be combined in a new virtual walk. For that reason, custom changes to apartments will be paid services that you will be able to outsource to Shibaverse or in the future to other people who have proper software and skills.



We will try to find ways so that some basic changes can be done with minimal human input and could be done with only some symbolic cryptocurrency payments. This way, you can alter and customize your real estate.

Although we cannot promise at this stage of the project, with VR software being enriched with new features every day, some possibilities of fully automated customization might happen in the future. Shibaverse will continually evolve and adapt to the latest advancements as the project and platform develops.

# **EXAMPLE**

# **ATTRIBUTES**

# **OF REAL ESTATE NFT**

- **Square meterage**
- **Address**
- **Floor number**
- **Commercial or Private type**

## **VR art galleries, shops, or other commercial spaces**

The artwork placed in customized interiors can be viewed in detail by browsing the panoramas and zooming in on them; some maybe even clickable to give further information.

This feature will allow users to see any artwork at a higher resolution, so that details such as brush strokes can be seen more clearly. Selecting an art piece can also take you to a shopping page of the creator.

In addition, a voiceover by the artist themselves can explain in depth how the work was conceived, what they tried to convey, and highlight their opinions. This will enrich the viewer even more, allowing for a more personal and detailed experience, and offer resources to the creator which they would find difficult to gather in the real world.

In further future (beyond the roadmap) integrating these features with blockchain marketplaces would allow the purchase of artwork NFTs without leaving the VR space. So users can click or focus (with VR headset) on the product/artwork, approve with their wallet and allow for the process to complete without the need of a hyperlink or visiting an external website or marketplace.

This can be a great feature for artists to have additional unique e-commerce space. Still, also, with a small commission fee from every purchase, it can be another way for Shibaverse to have income for intensive holders and platform development.

These features can also be used in customized private spaces where selling will not be the primary goal. You may share something about your life, a story of your collection, or some object that is valuable for you. Then invite others to visit your apartment to witness and indulge in anything you have placed, whether that's content you've created or even a recording of yourself or just your voice.





# Commercial vs Private

There will be two main types of real estate, commercial and private. Both types of real estate will allow users to breed puppies. However, they will have different kinds of permissions.



## Commercial Real Estate

Commercial real estate will be available to enter from the street, and any user will be able to come into the shops and interact without any permission and special invitation. These properties will have high exposure for potential customers and be limited in numbers. Genesis district will only have 30 commercial properties. Due to the children-friendly approach of Shibaverse, the retail spaces will be restrictive in terms of themes and products offered. No promotions of pornography, gambling, drugs, violence, or other controversial topics such as politics, evil, death, and ideologies will be allowed.



## Private Real Estate

The vast majority will be private real estate. To enter into these types of real estate, you will need to have a hyperlink that will allow entry and share your hyperlink with others to grant access to your friends to enter into yours. In the future, other types of access may be possible such as whitelisting/blacklisting.

These will be less restrictive in terms of content, but promoting things considered harmful for children will not be allowed. We want Shibaverse to be a safe place for the younger generation of blockchain enthusiasts. Although we understand the world is an ever-growing place for controversial topics, our metaverse should exclude these topics of interest.

# **Ways to get Real estate NFT**

- 1** **Rewards for liquidity providers and holders (private type)**
- 2** **Competition prizes (private type)**
- 3** **Purchasing on the platform (private and commercial type)**
- 4** **Purchasing limited editions on common marketplaces (private and commercial type)**
- 5** **Purchasing on second market**



# 1

## Rewards for liquidity providers and holders (private type)

Rewards in the form of a house or an apartment in the most prestigious Genesis district will be given to:

- The first 40 wallet addresses that provide at least 0,1 ETH plus the corresponding amount of Verse tokens to the liquidity pool on Shibaswap. You cannot withdraw or reduce your liquidity until snapshot.
- The first ten wallet addresses that provide at least 0,1 ETH plus the corresponding amount of Verse tokens to the liquidity pool on Uniswap. You cannot withdraw or reduce your liquidity until snapshot.
- The Top 100 addresses (during a snapshot at the end of December 2021) that provided at least 0,1 ETH plus the corresponding amount of Verse tokens to liquidity pool on Shibaswap or Uniswap.
- The top 100 addresses that hold the largest VERSE tokens amount during a snapshot at the end of December 2021.



***Whereas most technologies tend to automate workers on the periphery doing menial tasks, blockchain automate away the center. Instead of putting the taxi driver out of a job, blockchain puts Uber out of a job and lets the taxi drivers work with the customer directly.***

- Vitalik Buterin

**2**

## **Competition prizes (private type)**

Between now and snapshot in December, we will be running several competitions and giveaways for incentivizing our early investors. Some of the prizes will include private apartments located in Genesis District. Apartments will be airdropped to winners in Q1 2022.

**3**

## **Purchasing on the platform (private and commercial type)**

Newly built apartments will be available to purchase on the Shibaverse platform and will require VERSE tokens. There will be no private apartments available for purchase in The Genesis District; however, commercial real estate sale will take place in Q1 2021.

**4**

## **Purchasing limited editions on common marketplaces (private and commercial type)**

Special edition real estate will be available to purchase either on our platform or popular marketplaces like OpenSea. We do not disclose the usage of other tokens (like Shiba Inu, Ethereum) to purchase some specific real estate.

**5**

## **Purchasing on second market**

As ERC-721 tokens, real estate can be traded on standard NFT marketplaces.



***If it seems like an interesting idea, then, you know, let's just, let's just go implement it (...). We can try it out, we can experiment. And it's for the just pure joy of curiosity and experimentation. (...) That it was like , look, here's an interesting idea, why don't we run with it, if it works out, it could change everything.***

- Gavin Wood

Co-founder of Ethereum and creator of Polkadot



## **Additional NFT assets**

In Shibaverse, anything can become an NFT asset: buildings, pieces of land, trees, furniture, or clothing. All goods can be easily monetized, bringing almost endless possibilities and new ways of entertainment or generating income. Currently, the only available NFTs at this early stage will be real estate (apartments or houses) and balloon dogs. Another NFT asset that will be added to the game at a later stage will be accessories for your balloon dogs. They may, for example, improve your pet's skills during the game and other qualities.

You will be able to collect these accessories while exploring Shibaverse or by taking lessons at Shiba Academy. Some may also be available for purchase in our marketplace. One of the features we would like to offer is the ability of changing balloon dog appearances. Considering the fact that we want balloon dogs to be 3D rendered, that feature depends strongly on available technology.

## **Where will the NFTs live?**

We want Shibaverse to be entertaining and as convenient as possible. And we know the frustration that high transaction fees can cause, sucking the fun and enjoyment out of our project. This is why our world will utilize an EVM (Ethereum Virtual Machine) compatible blockchain or one of the layer two rollup scaling solutions of Ethereum Mainnet.

The following aspects will be taken into consideration while choosing technology:

- Low network fees - approx. less than 0.10\$ per swap
- Speed - transaction confirmation time less than 1-2 seconds
- Adoption and infrastructure providing easy access to users (bridges to other chains, user-friendly experience, wallets)

## **Business model**

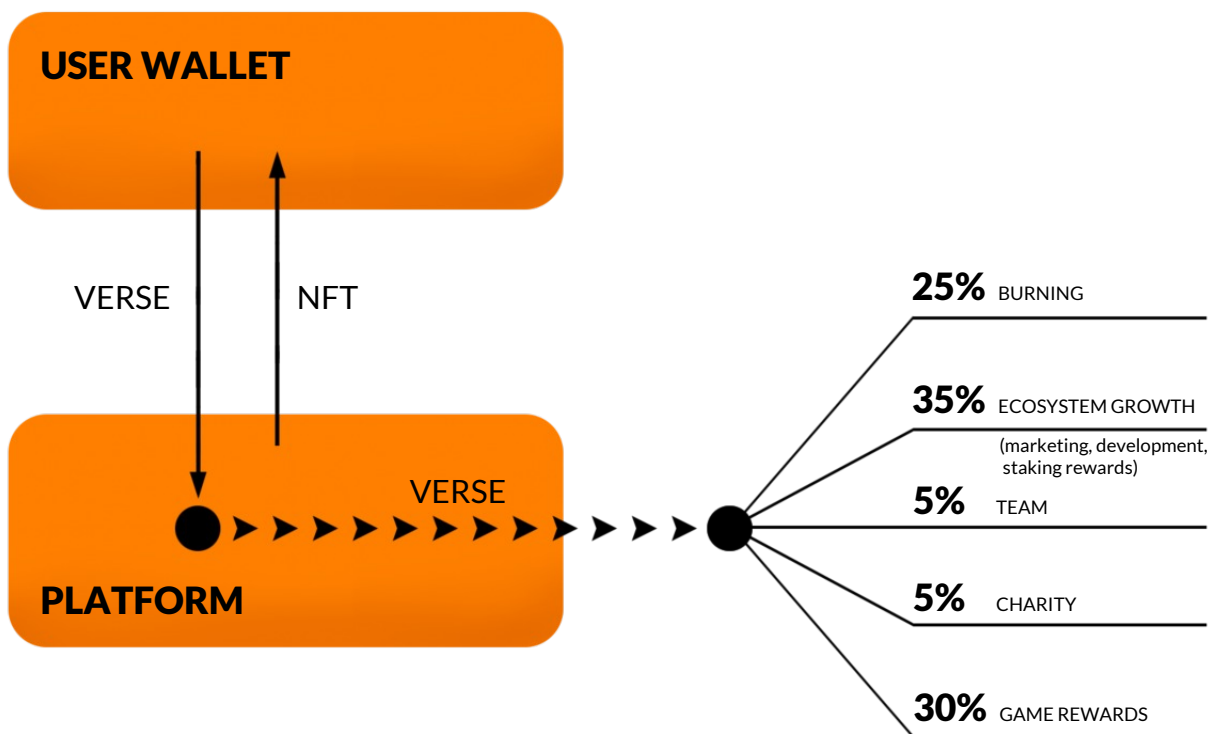
### **Initial funding of the project**

The project was funded 100% internally with the private means of the team. The current team, which consists of three people at the time of writing this whitepaper, works voluntarily full-time. With platform launch in Q1 2022, our project aims to generate more means of income that will enable further development. In the following paragraphs can be found future sources of income.

## ➤ Incomes from minting NFTs

Each purchase of the newly built real estate will require VERSE tokens. Those tokens will not directly come back to the market in a simple way.

Tokens will be divided and distributed to stakers, development/marketing fund, team fund, gaming rewards. Some will be donated for children's charity. The rest will be burnt forever, decreasing the circulating supply. Such a mechanism will create constant demand for Verse tokens.



We do not disclose the usage of other tokens (like Shiba Inu, Ethereum) to purchase some specific real estate. Those special editions will be available to purchase either on our platform or popular marketplaces like OpenSea.



## **Incomes from transacting NFTs**

The main distinction that makes NFTs unique is that creators can earn a percentage cut of the resale of the NFT in the secondary market (in perpetuity). Before NFTs/blockchain, after the initial sale of an artist or creator's work, they would not have had a convenient way to track the subsequent transactions of their work or maintain a consistent royalty (at least not all).

Regardless of how the value of the workpiece increases over time, they do not stand to gain anything from the works previously sold. Powering NFTs by smart contracts on the Ethereum blockchain makes it possible for Shibaverse to have income every time our real estate or Shiba changes the owner. The NFT royalties will be automatic payouts to our Metaverse to ensure funds for marketing and further platform development.



## **Paid Services**

There are many ways a thriving working city can generate income. That is also true for metaverses. More advanced methods of income will be realized in time as the technology and the project develops. However, we have solid example ideas which continually fund the project for development.

### **Here you may get acquainted with sample ideas:**

- Adverts in form of motion billboards or exhibitions in public spaces
- Custom names for streets, squares and other public spaces.
- Dedicated buildings for other cryptocurrency projects or brands
- Custom renderings and custom movies for those projects and brands.

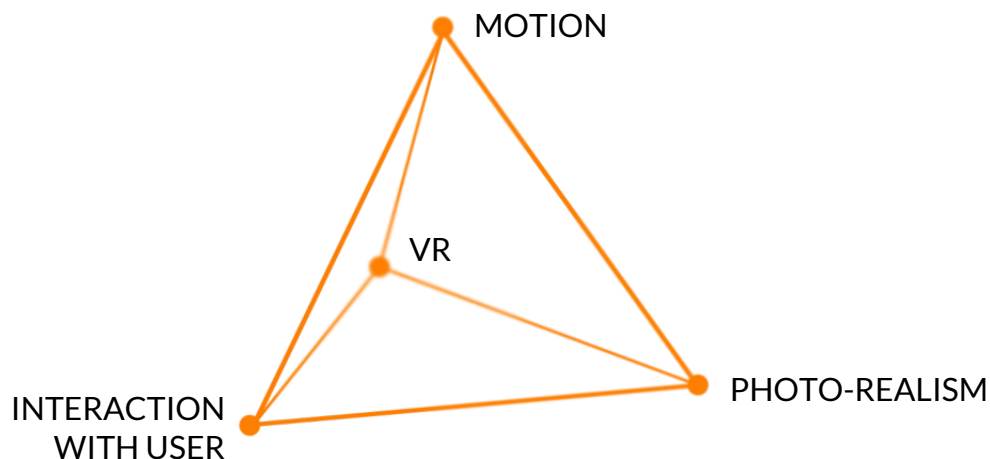


**THERE ARE 3  
RESPONSES TO  
A PIECE OF  
DESIGN - YES,  
NO, AND **WOW!**  
WOW IS THE  
ONE TO AIM FOR.**

- MILTON GLASER

## ► Interaction, photorealism & motion

Termed by Vitalik Buterin, The Blockchain Trilemma addresses the challenges developers face in creating a blockchain that is scalable, decentralized, and secure — without compromising on any facet. Virtual worlds have their own Trilemma consisting of three aspects: motion, interaction, and photo-realism. Retaining them is possible but extremely difficult due to limited resources on the server-side, end-user side, and road in-between.



The more full-motion, interactive, and photo-realistic an experience is, the more resources it will need. Trying to achieve and retain all three aspects of the Trilemma plus adding the virtual reality aspect on top (another multiplier to the equation) requires a lot of different hardware and software to allow us to bring our vision of Shibaverse to life.

The vast resources that we require to develop the metaverse can easily be solved with enough funds to cover the costs of the technology, licenses, and team.

However, the resources needed on the user side (your computing power) are beyond the reach of an average person, which is why gamers will have dedicated games consoles and gaming computers that have higher costs because they will require better graphics cards. Bandwidth consumption can also pose an issue with some users.

We have to decide on how best to approach specific user-related issues and how best to deliver the project so the majority of people can use it without problems.

## **We are focusing on developed three kinds of independent experiences:**

**1**

### **VR photo-realistic real estate interiors and cityscapes**

The virtual reality experience will involve a Google Street View-style virtual tour within Shibaverse. In addition to just being able to look around and travel between specific points within the metaverse, users will be able to have some basic level interaction abilities with their surroundings (such as being able to tap on products in shops to obtain more information) and witness motion (like the movement of flames in a fireplace). This experience will allow you to invite others into your home so they can see it in a full 360-degree view. To make the experience better, some advanced users who have access to the commonly available VR headsets (like Oculus and Samsung Gear VR) will be able to use them to be directly within your home.



## 2

### **Photo-realistic movies and animations**

Residents will be able to order their very own short movie that will almost act as a “trailer” of their home. This “drone style” tour will start from the center of Genesis square and take the viewer directly to the interior of your apartment. These will not implement VR technology. However, you can expect the motion of objects such as Shibas hanging around, plants moving in the wind, and special effects like rain and sun rays. These custom trailers will be a way to increase the value of the real estate and show off your home interior to future potential buyers.

## 3

### **Interactive play-to-earn games utilizing 2D game engines**

The 2D graphics game engine experience within Shibaverse will be the most interactive elements of our platform. They will allow multi-user playing where people can compete against each other. These games generate the lowest bandwidth consumption and demand the least processor power which will allow them to be more responsive and avoid lagging. For that reason, users will be able to easily play even on basic smartphones and computers.

Virtual reality technology is being developed rapidly and new features are being added on a daily basis. The three kinds of experiences described above will be a strong foundation for our project development into the future.

We are also aware that it is hard to describe these experiences in words. We believe that by the end of Q4 2021 most of Genesis district is ready to show and words will not be necessary anymore.



# Roadmap

(include domain reg date)

## Q3 2021

- Project concept, tokenomics & business model design.
- Domain registration (Aug 9th, 2021), Website design, and launch.
- Team creation & Token generation event (Aug 19th, 2021).
- Adding liquidity pools to Shibaswap and Uniswap.
- Liquidity burn to Shibaswap & Locking Rewards wallet to Unicrypt.
- Activating Social Media channels.
- Coingecko & CoinMarketCap listing.
- Building community awareness & Activating social channels.
- Smart contract architecture planning.
- Deploying initial marketing & competitions
- Genesis district detailed sketches and descriptions.
- Writing up Documentation/Whitepaper.
- Finalizing all foundations & ideas prior to Q4.

## Q4 2021

- Purchase of rendering hardware and software licenses.
- Deploying marketing & competitions
- Genesis district modeling.
- Genesis district renderings and movie trailers.
- Genesis district first VR tours.
- Interiors modeling, renderings, VR tours.
- Holders and liquidity providers snapshot.
- Platform code and smart contracts development.



## Q1 2022

- Initial launch of Genesis district (without blockchain functions).
- Genesis district commercial spaces sale.
- Shiba balloon dog and real estate NFT airdrop.
- Shiba Swap district design and property sale.
- Shiba Academy building design.
- Platform integration with blockchain.
- Birth of first puppies.
- First freelance job offerings for the community.

## Q2 2022

- NFT marketplace for Shibaverse assets.
- First Play2Earn elements.
- NFT VR galleries for creators.
- VR walks across Shibacity, Shiba Academy interactive courses.

## Q3 2022

- NFT accessories implementation
- Play2Earn games
- Marketplace for user NFTs

Disclaimer: as a community-driven and community-funded project, the realization of the roadmap is dependent on various conditions (like market sentiment, number of volunteers, etc). Therefore some functionalities may happen earlier, and some may be delayed. We will be providing transparent statements on roadmap progress, which will allow us more room if we need to adjust some of the dates.

## **Beyond the roadmap**

Our ideas reach beyond the roadmap. Here are some features we cannot promise to realize at this stage of our project. But why not think BIG?

- We are inviting other crypto communities to have their cities and districts.
- Inviting companies and well-known brands to have their buildings within our metaverse.
- Gaming using 3D game engines like Unreal Engine or Unity.
- We are scanning physical objects and bringing them to our metaverse.
- Fully-fledged virtual reality shopping experiences of digital or even physical goods that arrive straight to your doorstep.

## **Risks**

This part you will not find it in most whitepapers. However, we want to be transparent with all of our investors from the beginning.

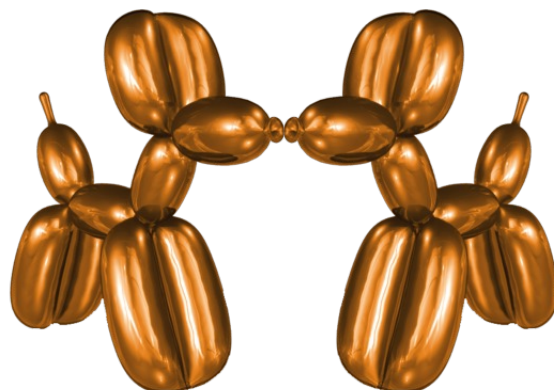
There are as many reasons in the crypto space for a project to succeed as reasons for a project to fail. Some depend on internal issues (such as team, smart contracts, and security), and some depend on external conditions like market sentiment and competition.

Shibaverse is indirectly connected to the Shiba token ecosystem and Shiba community. Seeing how great, creative, and strong-willed the Shiba community is, we believe in the success of our project and broader recognition in the whole cryptocurrency market.

With the right people, tools, resources, and funding, we can far surpass our initial concepts and ideas in order to create and manifest a successful and impactful project.

Though we are not financial advisors, we suggest that when investing, consider these standard rules: never support more than you can afford to lose. When your capital multiplies, consider taking out your initial investment. Since being constantly anxious about price may lead to bad decisions, these rules can make you a stronger handed holder and benefit you more in the long term.

As we have previously outlined, the growth potential in the NFT and gaming sector is likely to multiply and grow further in the coming years due to many things such as Covid restrictions and the success of the eSports sector, so we think that the pros outweigh the cons. This is the main reason we started this project and will continue to pour our hearts and efforts into it. Please do your research and invest with all of this in mind.





# **How to support our project**

## **Purchasing Tokens and Donating**

The best way to support the project is to buy and hold VERSE Tokens. Price appreciation of VERSE will allow us to have more funds for platform development, ensuring faster growth of the project.

Metaverse projects are not a “copy & paste” type of development and require substantial resources. A simple DEX (decentralized exchange) can be created in a single day by using popular swaps and minor alterations to the code and layout.

Shibaverse will be designed from scratch by architects, graphic and blockchain developers. 3D/VR renderings demand enormous resources, computing power, software licenses, and time. This requires a lot of work and funding, but an increase in the price of the tokens will allow us to invest in all of these resources.

You can also support us with donations as this will help tremendously with these costs in the meantime. The only valid address is

**ERC-20 -  
0x32A271c28593CCAF0494f  
CDf8EA29773C4b4e80C**

You can donate both on ETH and BSC chain.



## Using your social media power

As our project is community-driven, we strongly urge people to start spreading the word on social media. Get yourselves on Twitter & Instagram and start sharing and retweeting our content, tagging people, using popular and trending hashtags for maximum exposure, make youtube video reviews, be creative and get the project heard!

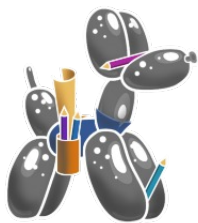
Take the initiative and ownership of your investment, go into popular crypto groups and talk about Shibaverse, join chat rooms, voice calls, and other similar mediums to host AMAs, make infographics, artwork, stickers, absolutely anything! You spread the word, and we develop the game, and everyone collectively does their part!



## Team



**Shibaversefounder** earned his Master's Degree in Telecommunication Engineering from one of the European Universities of Technology. After that he has run a business for several years gaining customers from different parts of the world. During the past two years he is strengthening his skills in the blockchain industry. He is a fan of decentralization and impeccable design.



**Shibaversearchitect** achieved her Masters Degree in Architecture from one of Europe's Universities of Technology. She worked both in architecture and urban planning companies where she took part in creating from inception the entire town. She has earned her own trademark in the design field. She is very experienced in planning both outdoor and indoor spaces.



**Shibaverserocketeer** earned his Bachelor's Degree in Business & Marketing in one of the European Universities of Public Research. Having worked with successful global fashion brands he's accumulated ten years of experience in the social media marketing, business branding and promotions sector. Moving onto helping manage and promoting cryptocurrencies & DeFi projects. Currently the Chief of Marketing at Shibaverse.



# USEFULL INFORMATION

Twitter | Instagram | Telegram | Discord | Reddit | Medium  
CoinGecko | CoinMarketCap

## Verse Token Address

**0x7ae0d42f23c33338de15bfa89c7405c068d9dc0a**

(Buy on ShibaSwap) (Buy on UniSwap)

## Provide Liquidity Till December To Obtain Digital Real Estate

(Provide on ShibaSwap) (Provide On Uniswap)

(Limited Spaces! More Info Here)

## Liquidity Permanently Burned On ShibaSwap

(ShibaSwap LP Token Tracker)

(Transaction Hash Proof)

## 20% Rewards Wallet Locked Till 2022

(UniCrypt Link) (Transaction Hash Proof)

To View UniCrypt Lock: Connect Wallet & Paste The Token Address

## TokenSniffer Automated Audit

(Link To Audit)

**contact@shibaverse.io | Shibaverse.io**